



St Michael's Catholic Primary School

With Jesus we can Achieve what we Dream and Believe!

Newsletter 31

Saturday 14th May 2022

Contact Us



Guion Street, Liverpool, L6 9DU



0151 263 8460



michaels-ao@st-michaels.liverpool.sch.uk



@STMTuebrook



The Parents App



https://stmichaelscatholicprimary.co.uk/

Diary Dates

Tues 17th & Wed 18th May

Parents Evening

Friday 27th May

School closes (normal time)

Tuesday 7th June

School reopens

Message from the Headteacher

Dear Parents and Carers

Please remember this week we have our **Parent/Carer Evenings Summer Term 2022**.

We are delighted that now many of the covid safe restrictions have been removed we are able to host parent/carer evenings in school.

This will be a great opportunity for you to get an update about how your child/children are progressing in all areas of their school work.

We want to give all our parents some additional time as this is our first 'normal' parent/carer evening since the national pandemic. Therefore we will host these meetings over two nights:

Tuesday 17th May 3.30pm-6.30pm and Wednesday 18th May 3.30-6.30pm

You will also have an opportunity to look through your child's work and see some of the lovely class work displayed in their classroom.

In the infant hall you can sample some of our school dinners –this will help to give you a flavour of the types of meals children receive at lunchtimes. Please pop in and taste the range of samples. A cup of tea/coffee and a biscuit will be available if you want a quick drink in between meetings.

Mr. Smith, Ms Cornett (School Learning Mentors), Mrs Birch (Safeguarding Lead and SENCO) and I will be available to meet with any parents/carers to discuss any school concerns or suggestions.

We are very much looking forward to welcoming all our parents and carers to these meetings.

Year 6 SATs – all complete and sent away for marking!

We are very proud of all our year 6 pupils. As a special treat for all their hard work we are taking the two classes to the cinema on Monday to relax and enjoy a film. On Friday they had a 'chill out' afternoon playing non digital games, outdoor sports and ate delicious pizzas made to order by our school kitchen team.

Queen's Jubilee Celebrations

As you know this year it is the Queen's Platinum Jubilee. The Platinum Jubilee Bank Holiday weekend will take place between Thursday 2nd June and Sunday 5th June. The four-day weekend has been planned to celebrate 70 years of the reign of Queen Elizabeth II. This special bank holiday falls in our next half term holiday.



Monday 30th May – Monday 6th June and School re-opens on Tuesday 7th June 2022

School Jubilee Celebrations

We will be celebrating this very special occasion in school throughout the week of **23rd—27th May**.

We will send a plan of these activities early next week so please look out for it.



I wish you all a wonderful weekend

Best Wishes Mrs Rigby



This week our **Collective Worship** theme has been **Aspiration**. During SATS, the children have had an opportunity to reflect on how each of them can use their gifts and talents to achieve their goals and aspire to be the best they can be, helping each other and making a difference in their lives and the lives of others.

Aspiration: You can do it! Proverbs 16:3
 Aspiration: You can do it! Joshua 1:9
 Aspiration: You can do it! Ephesians 2:10
 Aspiration: You can do it! Romans 12:6-8
 Aspiration: You can do it! Romans 12:6-8
 Aspiration: You can do it! Romans 12:6-8

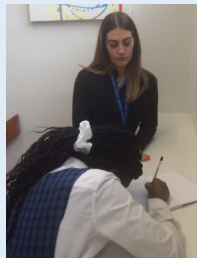
Loving God,
 Help us to love and care for all your people
 Here in Liverpool and throughout the world
 Help us to work together to make the world a better place.
 Amen

Read the **Parish of St Michael & Sacred Heart Newsletters** and **The Wednesday Word**

Our annual **Aspire and Achieve** Week returns this year. It will be held between 4th and 9th July. It is an attendance initiative that teaches the children that in order to reach your potential it is vital to attend school regularly. We will have a variety of visitors coming into school to speak to and work with the children. If you would like to come into school and talk about your job please speak to your child's class teacher or Miss Cornett.

Reception 2022
 A big welcome to all families who have been allocated a Reception place in September 2022. We are looking forward to welcoming you all! We still have some places available for Reception 2022 visit the Liverpool City Council admission page to apply—[here](#).

Staff Interview with Head Pupil
 What inspired you to become a teaching assistant?
When I was your age a Teaching Assistant in school, helped me so much. She inspired me to want to help others the same way she helped me.
 If you could be anything other than a Higher Level Teaching Assistant what would it be?
I would be an air-hostess as I would love to travel the world.
 Where do you see yourself in 5 years?
I would still like to work in schools, having a positive impact on children. Preferably as a learning mentor. Miss Duncan



St. Michael's Catholic Primary School
 Guion Street, Liverpool, L6 9DU
 30 Hour Places Available!
NURSERY PLACES AVAILABLE FOR SEPTEMBER 2022
 (Including free 30 hour places)
 Apply Now!
 Apply for a 30 hour place at:
www.gov.uk/apply-30-hours-free-childcare
 For more information contact us on 0151 263 8460 or email michaels-ao@st-michaels.liverpool.sch.uk
 Visit our website www.stmichaelscatholicprimary.co.uk
 Our school has the highest of aspirations for all our children
 "With Jesus we can achieve what we dream and believe"

Whole school attendance this week is 96.6%. Our target is 97%.
 Attendance has been absolutely fantastic this week. We have achieved over 97% everyday with 2 classes even achieving 100% all week. Thank you for your continued support. We couldn't achieve this without you. Pupils who are in every day for the next 2 weeks have the chance to win some amazing prizes at the end of this term including a **£50 voucher for ASDA** supermarket.
 Let's continue this amazing achievement in our school.
 Ms Hayes
Be Ready Be Respectful
Be Safe Be in!



Happy Birthday
 Joshua Jebasingh
 Petronela Demeterova
 Laurie O'Reilly
 Joanna Wabela
 Mrs Pither



Carpentry

For a number of weeks, children from Year 4 have been working on a carpentry project with Mr Curtis, who kindly comes in every Tuesday afternoon to share his knowledge and skills.

The children started by learning the basics of how to use essential carpentry tools. They hammered nails and pins into blocks of wood to fix pieces together. Then they learned how to use tenon and panel saws to cut straight pieces of wood. Next they found out how to cut more intricate shapes with a coping saw.

Once they had mastered the basic techniques, each child had the opportunity to work on a project of their choice. They have made various items including boxes, a

wooden angel, wooden letters to represent their names and they all should be very proud of themselves.

It's a wonderful opportunity for the children to work on their listening, communication and coordination skills, and it has been lovely to watch their confidence grow as they master new technical abilities.



Darcy: "I learned how to be sensible with a saw and cut wood and be safely."

Ezekiel: "I like being in the workshop and I love building things."

Kayden: It taught me responsibility and I liked making stuff and using tools.



The children below have gone Above and Beyond in school this week.

They have been rewarded with a certificate and a hot chocolate with cream, marshmallows and biscuits.

Well done!



Mental Health

On Thursday, Stephen Gordon, a Mental Health Practitioner assigned to our school, visited Year 4.

The children discussed how mental health is as important as physical health and different strategies to improve this. They also talked about anxiety and how to measure their feelings. The sessions were fun, interactive and informative.

If you would like to discuss your child accessing support from Stephen please contact Mrs Birch.

Making a referral
Referrals to the MHST are made through school. Speak to your school's mental health lead (MHL) or an alternative member of school staff you trust about the difficulties being experienced by yourself or your child.
The mental health lead in your school is: _____
The EMHP in your school is: _____

Finding the right support
The MHST is not always able to offer the most appropriate support for all families. If this is the case the MHST will assist you in finding alternative support from the wide range of services available in Liverpool.

The Mental Health Support Teams are based between the 3 YPAS hubs over Liverpool:

YPAS Central Hub 35 Bolton Street Liverpool L3 5LX 0151 707 1025	YPAS North Hub Crossdale Road West Crosby L14 8YA 0151 305 2040	YPAS South Hub 35 Lyndene Road Liverpool L25 5NG Tel 0151 305 2031
---	---	---

YPAS
Young Person's Advisory Service

Liverpool CAMHS
0151 707 1025

Mental Health Support Teams

We all have mental health and sometimes need a bit of extra support. This is where mental health support teams can help you and your child to prevent problems from developing.

What is the Mental Health Support Team (MHST)?

The MHST works within schools with children, young people and their families, providing early support for mental health and emotional wellbeing. The MHST is made up of a range of practitioners that can offer evidence based interventions and support for the whole school.

What can the Mental Health Support Team work with?

- Low-level anxiety/worry - does your child appear to be anxious or have lots of worries?
- Low mood - has your child started feeling sad and does their mood not seem to be lifting?
- Understanding emotions - Does your child have difficulty expressing their emotions?
- Phobia - does your child have a phobia that is getting in the way of their day to day life?
- Parent support for anxiety - does your child appear to be anxious and can this be difficult to manage?
- Parent support for challenging behaviour - is your child displaying difficult/challenging behaviours?

These are just some of the areas the MHST can help support.

What does the Mental Health Support Team provide?

- Assessments for children identified by school staff as requiring support with their mental health and emotional wellbeing.
- Training for school staff and parents/carers to support children with their mental health and emotional well-being.
- Group workshops to support children with their mental health and emotional wellbeing.
- Individual one-to-one support for up to 8 weeks.

What happens in an assessment?

The Mental Health Support team will contact you to arrange an appropriate time to meet with you and your child. The assessment can take place in school or virtually. During the assessment, you and your child will be asked some questions and you will also be asked to fill in questionnaires. Once you have had an assessment, the MHST will help you to decide what the right support for you and your family is.



Support Your Child With Loneliness with the Ollee App

What is Ollee?

It's not always easy to get children to open up, and that's where Ollee comes in: to help you have those tricky conversations and to give you and your child extra support when you need it.

Download Ollee to see how it can support your child with loneliness

Download on the App Store | GET IT ON Google Play

Ollee is a digital friend for children aged 8-11, created by Parent Zone and BBC Children in Need's [A Million & Me initiative](#).

It can help your child explore feelings around subjects – like school, family, friends and the world – and support conversations about these with you, through connected accounts.

In the app, your child can select an emotion they're feeling – maybe happy, sad, worried or something else – and it will give them ideas about what to do. Even if they're not sure, Ollee will help them figure it out. With prompts such as, "I feel lonely", "no one listens to me" or "I'm growing up", Ollee can give your child supportive advice about that subject and how they feel.

To use Ollee, parents need to set up an account. If your child does too, you can link your accounts together. By linking accounts, you can save and share Ollee's advice and ideas together, helping to start conversations about feelings. You can also explore the different emotional scenarios your child might be experiencing – with tailored parenting advice.

Ollee – your virtual friend



Maskedmatician!

Use the mathematical clues to find out which adult is our Maskedmatician!

Mask 5
Who is behind the math?



My age is the product of 5 squared, plus 4

I have a dog. His age is the product of 90 divided by 10

The number of years I have worked at our school is difference between 549 and 545

The year group I teach in is the amount of sides on a triangle.

The number of letters in my last name is the product of $(5 \times 5) - 20$

My favourite singer was born 87 years ago.

Who am I?

Poet Visit To School



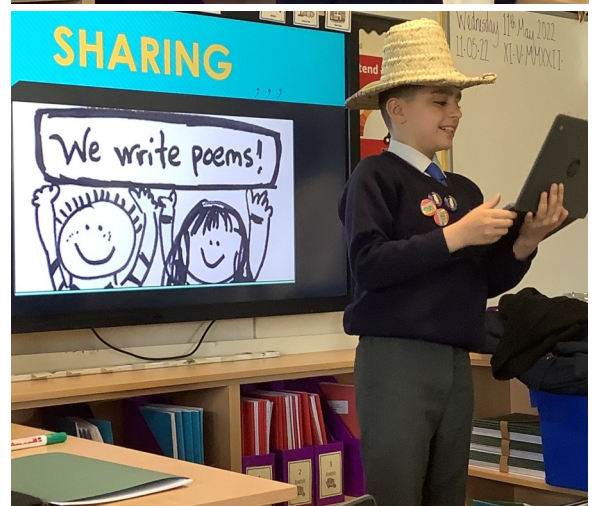
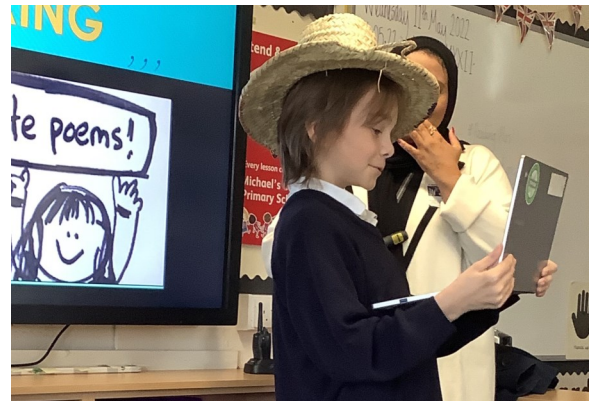
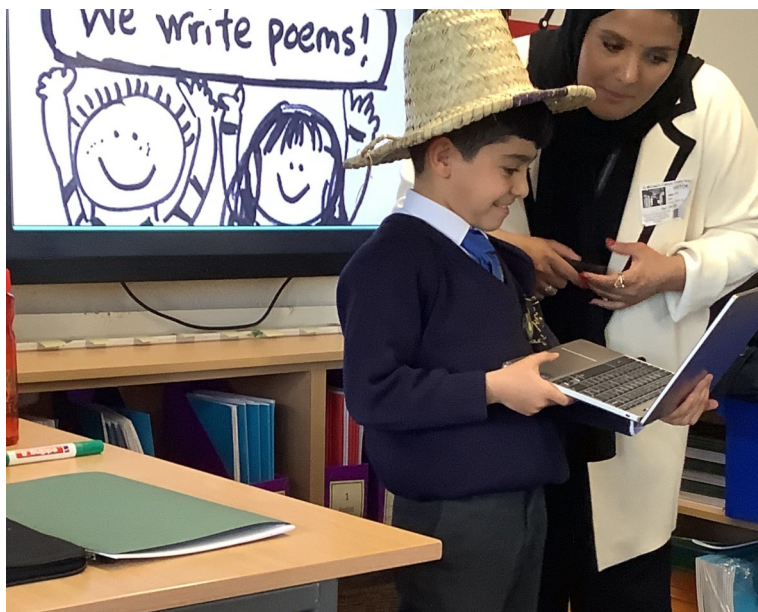
This week we were very lucky to have a visit from Amina Atiq, a Yemeni-Scouse poet.

She was both fun and engaging during her visit to St Michael's as she talked about her culture. The children were enthralled by the stories of her

Yemeni-Scouse heritage and how it influences her poetry. She actively encouraged the children to be themselves and to celebrate this in their writing. Considering how diverse our school is, her visit helped the children to embrace their heritage and to produce some beautiful poems all about themselves based on one of Amina poems.

Writing task 1:

If you were to describe yourself as weather, what weather would you be?





St Michael's Catholic Primary School



Term Dates 2021-2022



Autumn Term 2021

Term: Thursday 2nd September to Tuesday 21st December 2021

Half term: Friday 22nd October to Friday 29th October 2021 (school closed)

Terms ends: Tuesday 21st December 2021



Spring Term 2022

Term: Wednesday 5th January 2022 - Friday 8th April 2022

Half term: Monday 21st February – Friday 25th February 2022 (school closed)

Term ends: Friday 8th April 2022



Summer Term 2022

Term: Monday 25th April to Tuesday 19th July 2022

Half term: Monday 30th May to Monday 6th June 2022 (school closed)

Term Ends: Tuesday 19th July 2022

May Bank Holiday: Monday 2nd May 2022 (school closed)

Staff Development Days (School closed for pupils)

Wednesday 1st September 2021

Friday 17th September 2021

Friday 22nd October 2021

Monday 28th February 2022

Two extended twilight sessions

Guion Street, Liverpool, L6 9DU. 0151 263 8460 michaels-ao@st-michaels.liverpool.sch.uk



*'With Jesus we can **achieve** what we **dream** and **believe**'*

St Michael's Catholic Primary School



Term Dates 2022-2023

Autumn Term 2022



Term: Thursday 1st September to Wednesday 21st December 2022

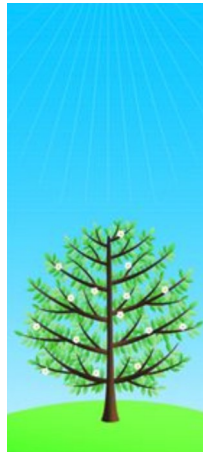
Pupils: Autumn Term 1 – Monday 5th September to Friday 21st October

Half term: Monday 24th October to Friday 28th October 2022

Pupils: Autumn Term 2 – Monday 31st October to Wednesday 21st December

Terms ends: Wednesday 21st December 2022

Spring Term 2023



Term: Wednesday 4th January - Wednesday 5th April 2023

Pupils: Spring Term 1 – Wednesday 4th January to Thursday 9th February

Half term: Monday 13th February – Friday 17th February 2023

Pupils: Spring Term 2 – Monday 20th February to Wednesday 5th April

Term ends: Wednesday 5th April 2023

Summer Term 2023



Term: Monday 17th April to Thursday 20th July 2023

Pupils: Summer Term 1 – Monday 17th April to Friday 26th May

Half term: Monday 29th May to Friday 9th June 2023

Pupils: Summer Term 2 – Monday 12th June to Thursday 20th July

Term Ends: Thursday 20th July 2023

May Bank Holiday: Monday 1st May 2023

Staff Development Days (School closed for pupils)

Thursday 1st September 2022

Friday 2nd September 2022

Friday 7th October 2022

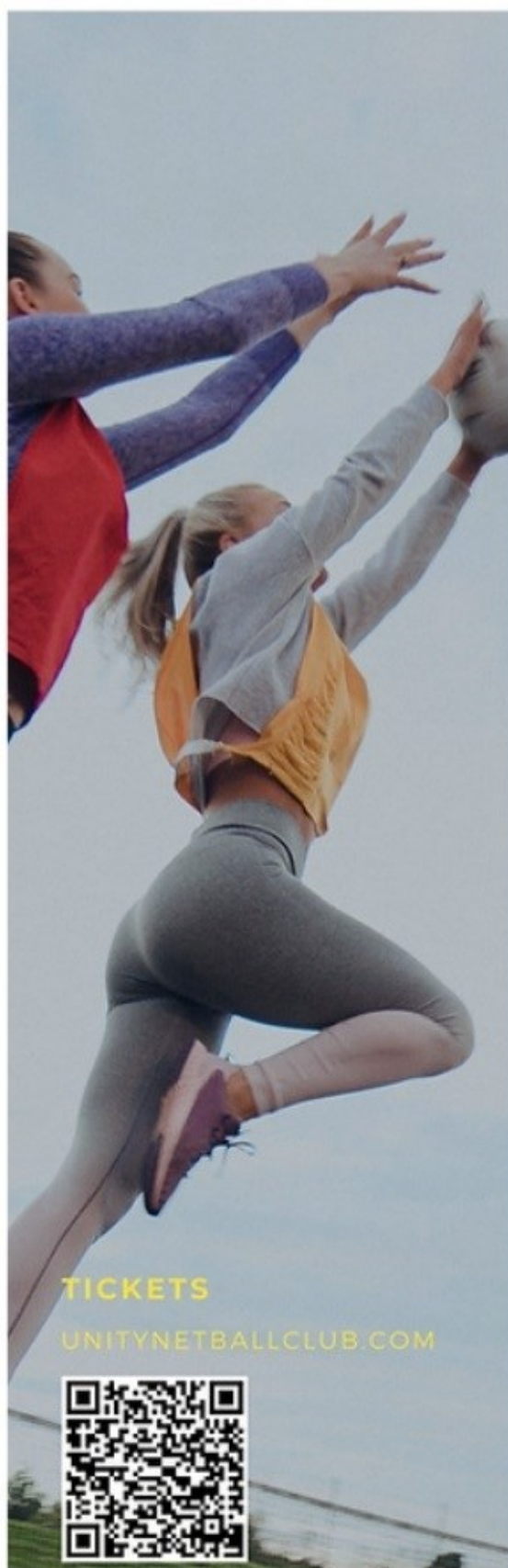
Friday 10th February 2023

Two extended twilight sessions



'With Jesus we can achieve what we dream and believe'

Junior Netball Camp



TICKETS

UNITYNETBALLCLUB.COM



UNC

UNITY NETBALL CLUB

COME JOIN US

JUNIOR NETBALL CAMP

**1,2 OR 3 DAY OPTIONS
30TH MAY TO 1ST JUNE**

**UNITY NETBALL CLUB
WELCOMES ALL 7 -17 YR OLDS
TO JOIN IN THEIR HALF TERM
NETBALL CAMP**

NON-MEMBERS WELCOME!

SESSION TIMES

7 - 12YRS 9.30AM TO 12
13 - 17YRS 12.30 TO 3PM

PRICES

£25 PER SESSION OR
£55 FOR **ALL 3 DAYS**

LOCATION

HOLLY LODGE GIRLS
COLLEGE, LIVERPOOL L12 7LE